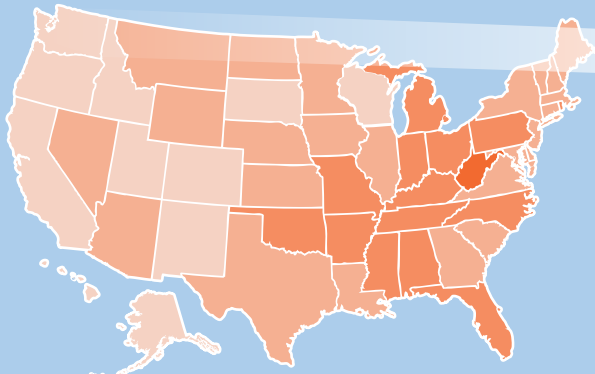


COPD in the United States: How is Your State Doing?

A Look at COPD by State: 10 Key Metrics¹

States grouped based on performance in 10 key areas, 5 being worst and 1 being best.



Washington has a lower burden of COPD but there is still room for improvement.

WASHINGTON

Washington has lower than average COPD prevalence, death, hospitalization and readmission rates but the overall smoking rate is higher than average. It has a lower than average influenza vaccination rate and a higher than average pneumonia vaccination rate for people with COPD.

By the Numbers – COPD in Washington

5.7% of adults have been diagnosed with COPD (prevalence)²

333,800 adults have been diagnosed with COPD (incidence)²

37.1 people out of every 100,000 die per year³

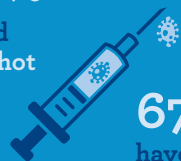
\$536 million is the annual cost for treatment⁴

Higher Proportions of Women than Men have COPD²



Vaccinations⁵

50.0% have had the flu shot



67.1% have had the pneumonia shot

Hospitalizations

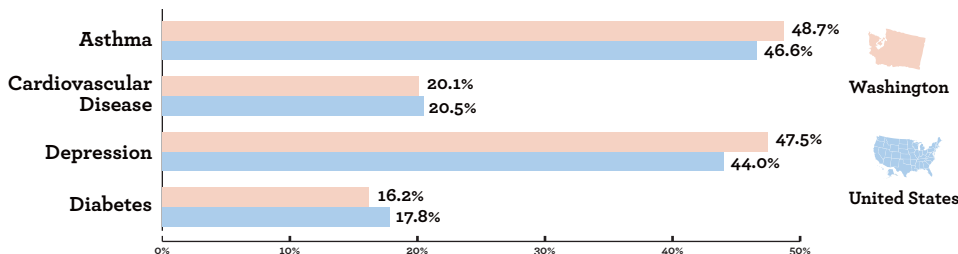
3,194 Medicare hospitalizations⁵

\$2,980 per Medicare beneficiary with COPD⁴

21.5% 30-day COPD readmission rate⁶

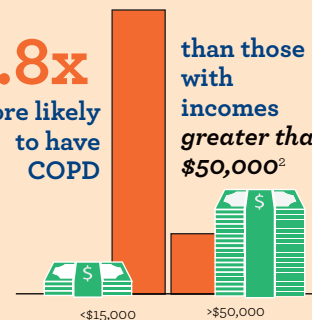
COPD and Chronic Diseases

Asthma, cardiovascular disease, depression and diabetes all have high prevalence rates in the COPD population, making earlier diagnosis, education and optimal treatment even more important.²



Individuals in Washington with incomes less than \$15,000 are

4.8x more likely to have COPD than those with incomes greater than \$50,000²



Change starts with empowering individuals, families and the healthcare community to prevent the disease, diagnose it early and treat it appropriately. Find out more and get involved at www.copdfoundation.org.