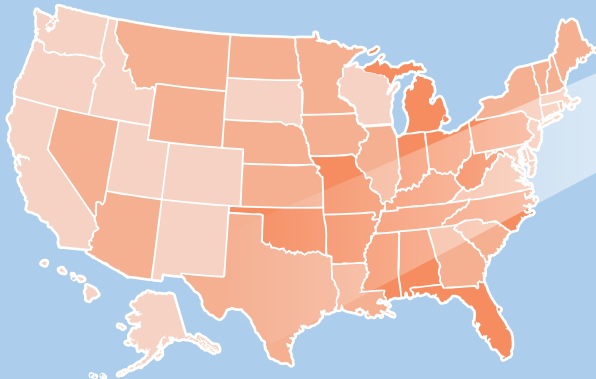


COPD in the United States: *How is Your State Doing?*

A Look at COPD by State: 10 Key Metrics¹

States grouped based on performance in 10 key areas, 5 being worst and 1 being best.

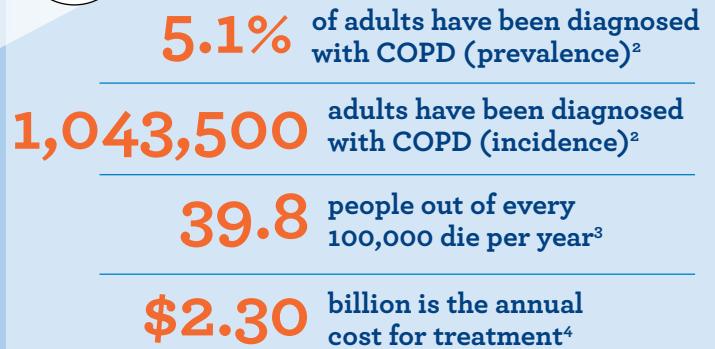


Texas has an average burden of COPD but there is still significant room for improvement.

TEXAS

Texas has a lower than average COPD prevalence, readmission and overall smoking rates but the death and hospitalization rates are higher than average. It has lower than average influenza and pneumonia vaccination rates for people with COPD.

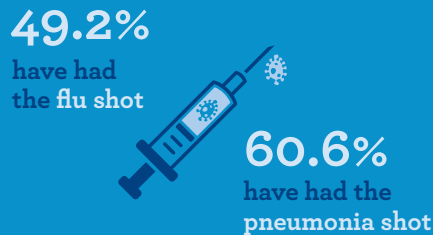
By the Numbers – COPD in Texas



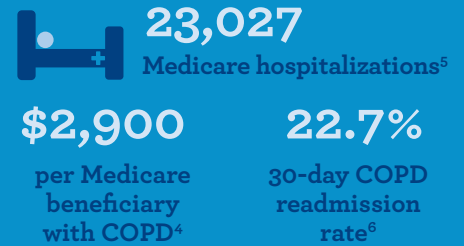
Higher Proportions of Women than Men have COPD²



Vaccinations⁵

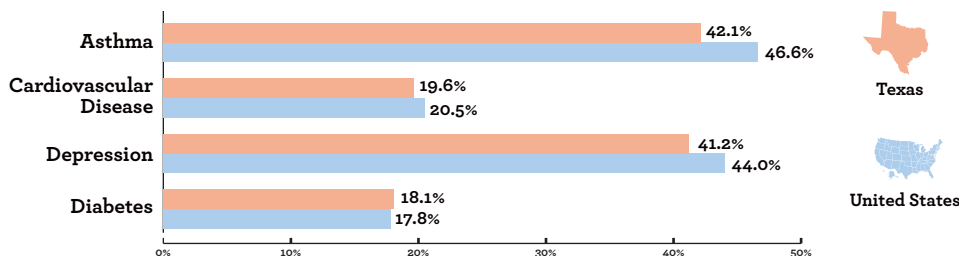


Hospitalizations

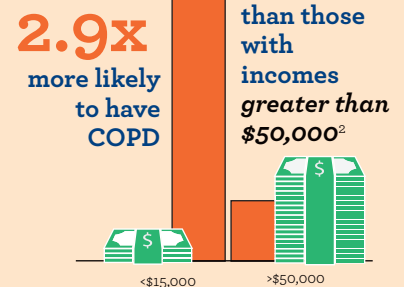


COPD and Chronic Diseases

Asthma, cardiovascular disease, depression and diabetes all have high prevalence rates in the COPD population, making earlier diagnosis, education and optimal treatment even more important.²



Individuals in Texas with incomes less than \$15,000 are



Change starts with empowering individuals, families and the healthcare community to prevent the disease, diagnose it early and treat it appropriately. Find out more and get involved at www.copdfoundation.org.