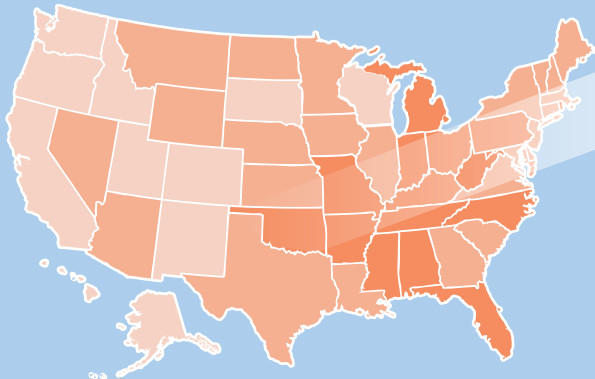


A Look at COPD by State: 10 Key Metrics¹

States grouped based on performance in 10 key areas, 5 being worst and 1 being best.



Oklahoma has a higher burden of COPD indicating there is significant room for improvement.

OKLAHOMA

Oklahoma has high COPD prevalence, death, hospitalization and overall smoking rates but the readmission rate is lower than average. It has higher than average influenza and pneumonia vaccination rates for people with COPD.

By the Numbers – COPD in Oklahoma

7.7% of adults have been diagnosed with COPD (prevalence)²

245,100 adults have been diagnosed with COPD (incidence)²

63.1 people out of every 100,000 die per year³

\$400 million is the annual cost for treatment⁴

Higher Proportions of Women than Men have COPD²



Vaccinations⁵

54.6% have had the flu shot



69.2% have had the pneumonia shot

Hospitalizations

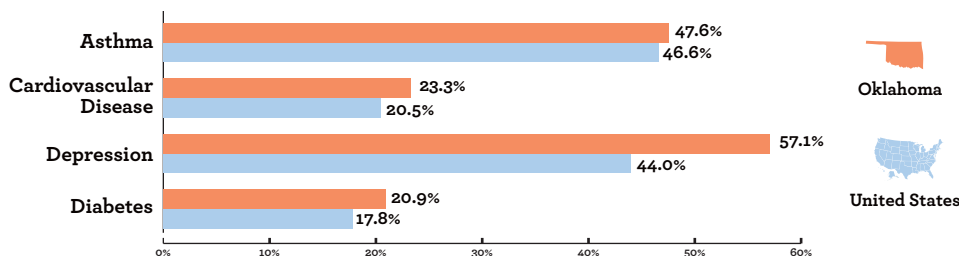
5,258 Medicare hospitalizations⁵

\$3,120 per Medicare beneficiary with COPD⁴

21.6% 30-day COPD readmission rate⁶

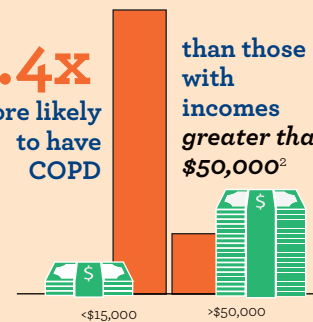
COPD and Chronic Diseases

Asthma, cardiovascular disease, depression and diabetes all have high prevalence rates in the COPD population, making earlier diagnosis, education and optimal treatment even more important.²



Individuals in Oklahoma with incomes less than \$15,000 are

4.4x more likely to have COPD than those with incomes greater than \$50,000²



Change starts with empowering individuals, families and the healthcare community to prevent the disease, diagnose it early and treat it appropriately. Find out more and get involved at www.copdfoundation.org.