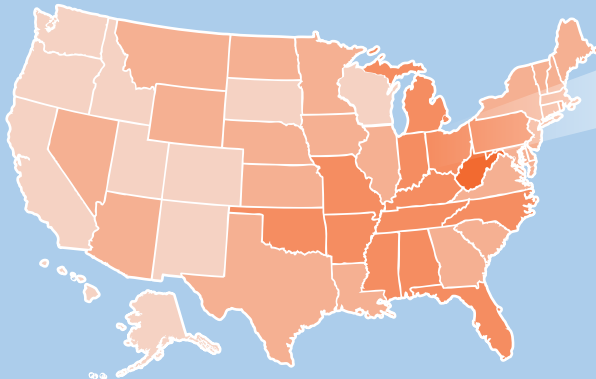


# COPD in the United States: *How is Your State Doing?*

## A Look at COPD by State: 10 Key Metrics<sup>1</sup>

States grouped based on performance in 10 key areas, 5 being worst and 1 being best.

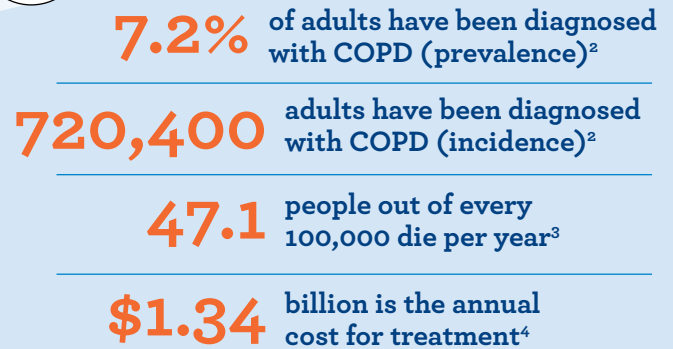


Ohio has a higher burden of COPD indicating there is significant room for improvement.

# OHIO

Ohio has higher than average COPD prevalence, death, hospitalization and overall smoking rates and an average readmission rate. It has lower than average influenza and pneumonia vaccination rates for people with COPD.

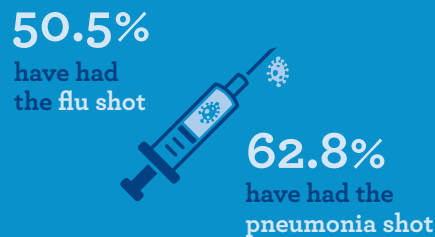
## By the Numbers – COPD in Ohio



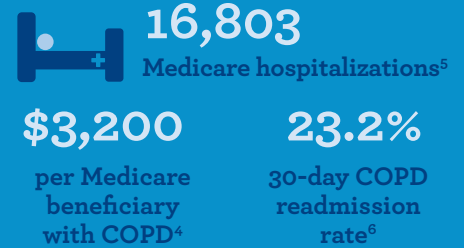
## Higher Proportions of Women than Men have COPD<sup>2</sup>



## Vaccinations<sup>5</sup>

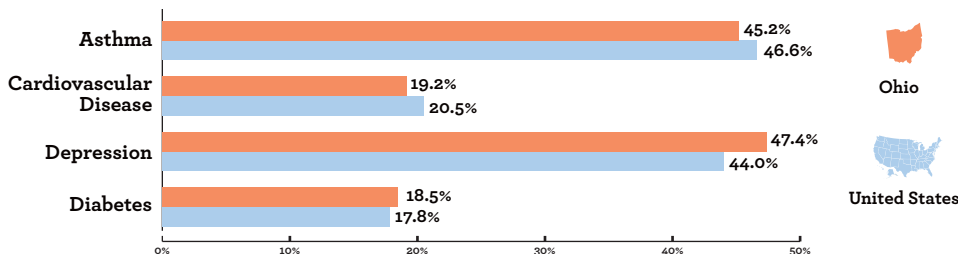


## Hospitalizations

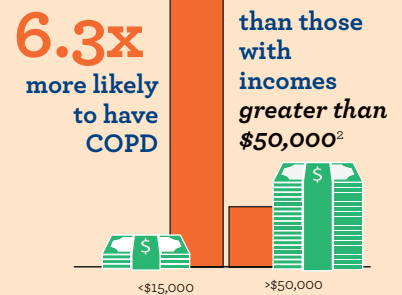


## COPD and Chronic Diseases

Asthma, cardiovascular disease, depression and diabetes all have high prevalence rates in the COPD population, making earlier diagnosis, education and optimal treatment even more important.<sup>2</sup>



## Individuals in Ohio with incomes less than \$15,000 are



Change starts with empowering individuals, families and the healthcare community to prevent the disease, diagnose it early and treat it appropriately. Find out more and get involved at [www.copdfoundation.org](http://www.copdfoundation.org).

<sup>1</sup>The 10 key metrics included age-adjusted COPD prevalence,<sup>2</sup> hospitalizations and emergency department visits,<sup>3,6</sup> age-adjusted COPD mortality rate,<sup>3</sup> prevalence of comorbidities among COPD patients,<sup>2</sup> influenza and pneumococcal vaccinations<sup>5</sup> and smoking prevalences,<sup>2</sup> per capita medical cost,<sup>4</sup> and the number of COPD patients per pulmonary rehabilitation program.<sup>2,7</sup> <sup>2</sup>Behavioral Risk Factor Surveillance System, 2014-2015. <sup>3</sup>Centers for Disease Control and Prevention WONDER, 2014-2015. <sup>4</sup>The 2006-2010 Medical Expenditures Panel Survey. <sup>5</sup>Chronic Disease Indicators Data, 2016. <sup>6</sup>Centers for Medicare and Medicaid Services Chronic Condition Data Warehouse, 2015. <sup>7</sup>The American Association of Cardiovascular and Pulmonary Rehabilitation Pulmonary Rehabilitation Directory, 2018. To view data collected for all states visit [www.journal.copdfoundation.org](http://www.journal.copdfoundation.org).