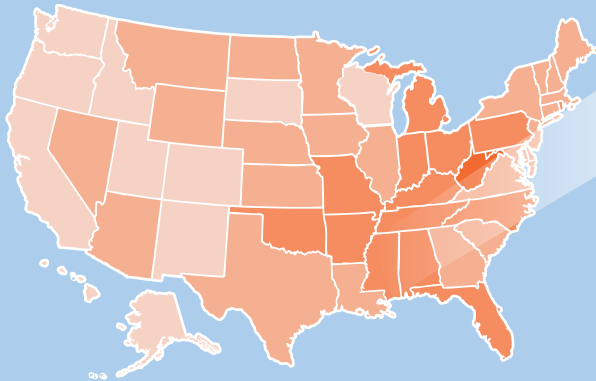


# COPD in the United States: *How is Your State Doing?*

## A Look at COPD by State: 10 Key Metrics<sup>1</sup>

States grouped based on performance in 10 key areas, 5 being worst and 1 being best.

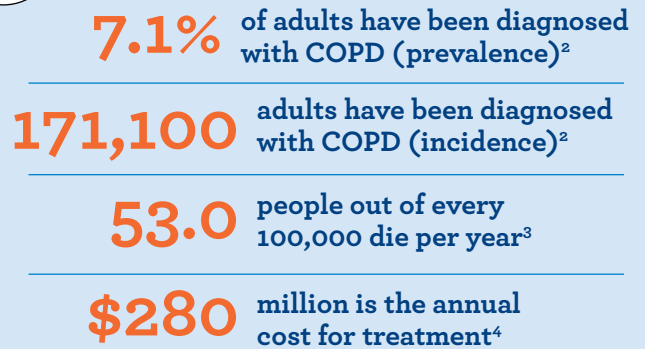


Mississippi has a higher burden of COPD indicating there is significant room for improvement.

# MISSISSIPPI

Mississippi has higher than average COPD prevalence, death, hospitalization and overall smoking rates but the readmission rate is slightly lower than average. The vaccination rate for influenza equals the US average and its pneumonia vaccination rate is lower than average for people with COPD.

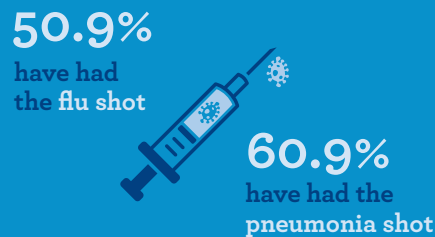
## By the Numbers – COPD in Mississippi



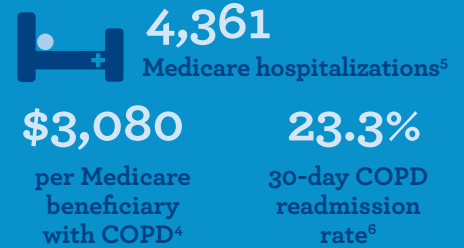
## Higher Proportions of Women than Men have COPD<sup>2</sup>



## Vaccinations<sup>5</sup>

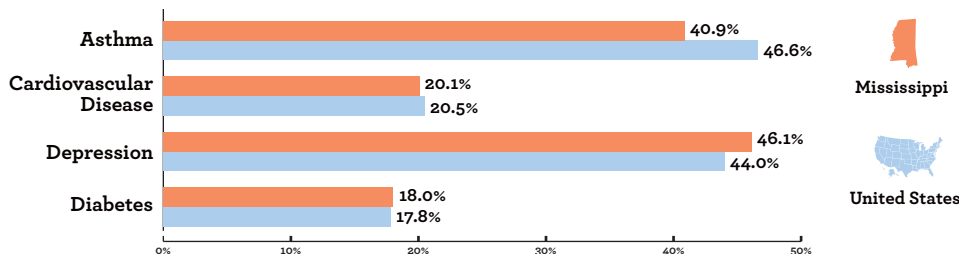


## Hospitalizations

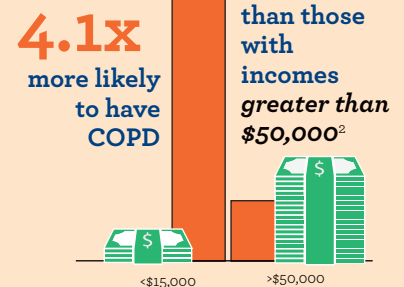


## COPD and Chronic Diseases

Asthma, cardiovascular disease, depression and diabetes all have high prevalence rates in the COPD population, making earlier diagnosis, education and optimal treatment even more important.<sup>2</sup>



## Individuals in Mississippi with incomes less than \$15,000 are



Change starts with empowering individuals, families and the healthcare community to prevent the disease, diagnose it early and treat it appropriately. Find out more and get involved at [www.copdfoundation.org](http://www.copdfoundation.org).