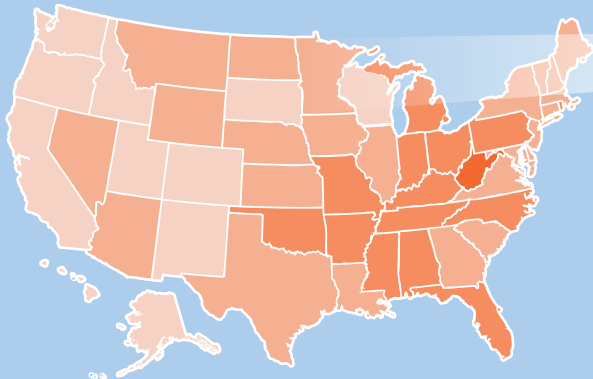


## A Look at COPD by State: 10 Key Metrics<sup>1</sup>

States grouped based on performance in 10 key areas, 5 being worst and 1 being best.



Minnesota has an average burden of COPD but there is still significant room for improvement.

# MINNESOTA

Minnesota has lower than average COPD prevalence, death, hospitalization and readmission rates and a higher than average overall smoking rate. It has a higher than average influenza vaccination rate and a lower than average pneumonia vaccination rate for people with COPD.

## By the Numbers – COPD in Minnesota

**4.0%** of adults have been diagnosed with COPD (prevalence)<sup>2</sup>

**186,100** adults have been diagnosed with COPD (incidence)<sup>2</sup>

**34.9** people out of every 100,000 die per year<sup>3</sup>

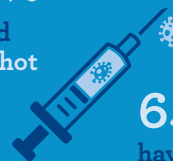
**\$629** million is the annual cost for treatment<sup>4</sup>

## Higher Proportions of Women than Men have COPD<sup>2</sup>



## Vaccinations<sup>5</sup>

**58.7%** have had the flu shot



**64.9%** have had the pneumonia shot

## Hospitalizations

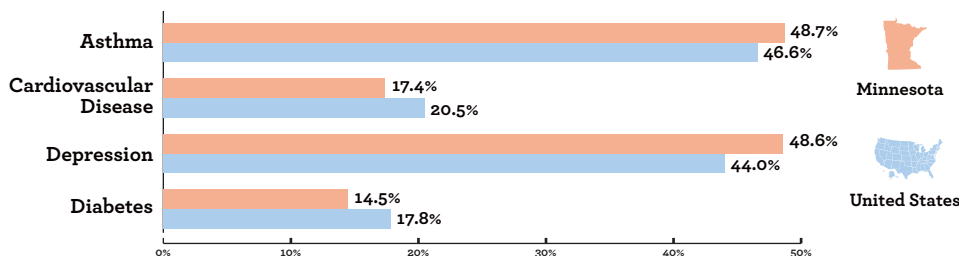
**3,186** Medicare hospitalizations<sup>5</sup>

**\$3,140** per Medicare beneficiary with COPD<sup>4</sup>

**22.8%** 30-day COPD readmission rate<sup>6</sup>

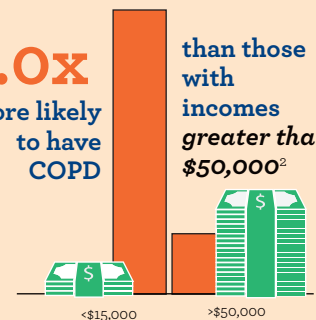
## COPD and Chronic Diseases

Asthma, cardiovascular disease, depression and diabetes all have high prevalence rates in the COPD population, making earlier diagnosis, education and optimal treatment even more important.<sup>2</sup>



## Individuals in Minnesota with incomes less than \$15,000 are

**5.0x** more likely to have COPD than those with incomes greater than \$50,000<sup>2</sup>



Change starts with empowering individuals, families and the healthcare community to prevent the disease, diagnose it early and treat it appropriately. Find out more and get involved at [www.copdfoundation.org](http://www.copdfoundation.org).