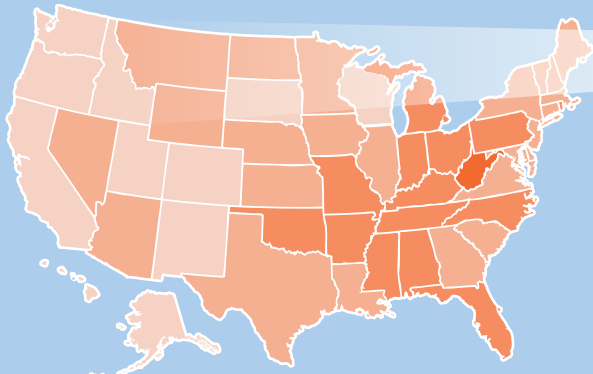


# COPD in the United States: *How is Your State Doing?*

## A Look at COPD by State: 10 Key Metrics<sup>1</sup>

States grouped based on performance in 10 key areas, 5 being worst and 1 being best.



Idaho has a lower burden of COPD but there is still room for improvement.

# IDAHO

Idaho has lower than average COPD prevalence, hospitalization and readmission rates but the death and overall smoking rates are higher than average. It has lower than average influenza and pneumonia vaccination rates for people with COPD.

## By the Numbers – COPD in Idaho

**4.6%** of adults have been diagnosed with COPD (prevalence)<sup>2</sup>

**59,300** adults have been diagnosed with COPD (incidence)<sup>2</sup>

**44.5** people out of every 100,000 die per year<sup>3</sup>

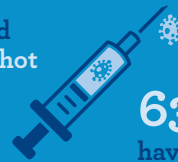
**\$120** million is the annual cost for treatment<sup>4</sup>

## Higher Proportions of Women than Men have COPD<sup>2</sup>



## Vaccinations<sup>5</sup>

**45.0%** have had the flu shot



**63.0%** have had the pneumonia shot

## Hospitalizations

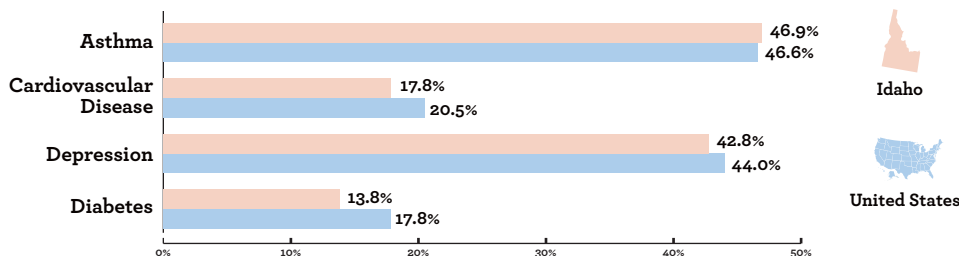
**563** Medicare hospitalizations<sup>5</sup>

**\$3,010** per Medicare beneficiary with COPD<sup>4</sup>

**17.7%** 30-day COPD readmission rate<sup>6</sup>

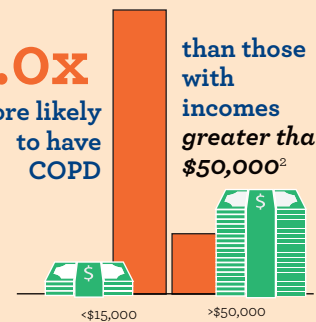
## COPD and Chronic Diseases

Asthma, cardiovascular disease, depression and diabetes all have high prevalence rates in the COPD population, making earlier diagnosis, education and optimal treatment even more important.<sup>2</sup>



## Individuals in Idaho with incomes less than \$15,000 are

**5.0x** more likely to have COPD than those with incomes greater than \$50,000<sup>2</sup>



Change starts with empowering individuals, families and the healthcare community to prevent the disease, diagnose it early and treat it appropriately. Find out more and get involved at [www.copdfoundation.org](http://www.copdfoundation.org).