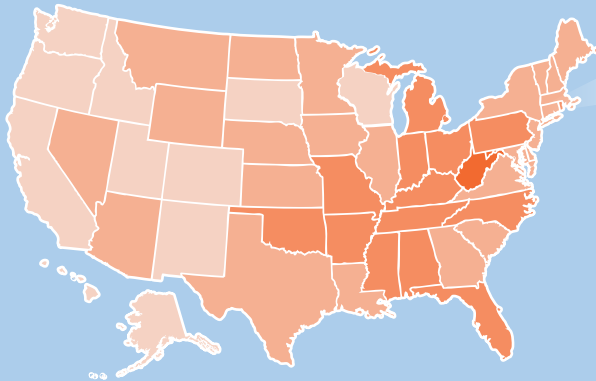


COPD in the United States: *How is Your State Doing?*

A Look at COPD by State: 10 Key Metrics¹

States grouped based on performance in 10 key areas, 5 being worst and 1 being best.



Connecticut has an average burden of COPD but there is still significant room for improvement.

CONNECTICUT

Connecticut has lower than average COPD prevalence, death and hospitalization rates but the readmission rate is slightly above average. The overall smoking rate equals the US rate. It has a slightly higher than average influenza vaccination rate and a lower than average pneumonia vaccination rate for people with COPD.

By the Numbers – COPD in Connecticut

4.6% of adults have been diagnosed with COPD (prevalence)²

144,100 adults have been diagnosed with COPD (incidence)²

28.8 people out of every 100,000 die per year³

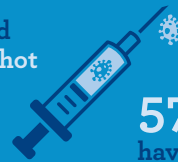
\$453 million is the annual cost for treatment⁴

Higher Proportions of Women than Men have COPD²



Vaccinations⁵

51.1% have had the flu shot



57.4% have had the pneumonia shot

Hospitalizations

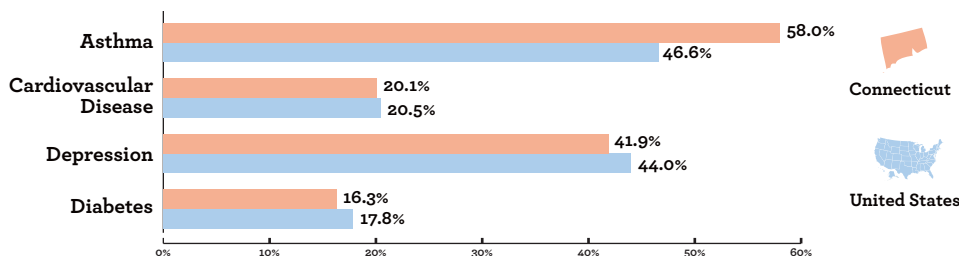
4,083 Medicare hospitalizations⁵

\$3,310 per Medicare beneficiary with COPD⁴

23.8% 30-day COPD readmission rate⁶

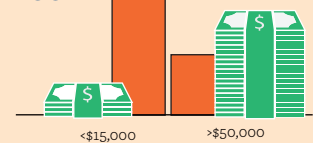
COPD and Chronic Diseases

Asthma, cardiovascular disease, depression and diabetes all have high prevalence rates in the COPD population, making earlier diagnosis, education and optimal treatment even more important.²



Individuals in Connecticut with incomes less than \$15,000 are

3.6x more likely to have COPD than those with incomes greater than \$50,000²



Change starts with empowering individuals, families and the healthcare community to prevent the disease, diagnose it early and treat it appropriately. Find out more and get involved at www.copdfoundation.org.